

STORYVERSE

Trading Cards Classroom Ideas



Explore Characters

Have students colour/draw/describe each character using single adjectives, simple sentences or full descriptive paragraphs.



Guess Who

Read out the character description and have students guess which character the text is referring to.



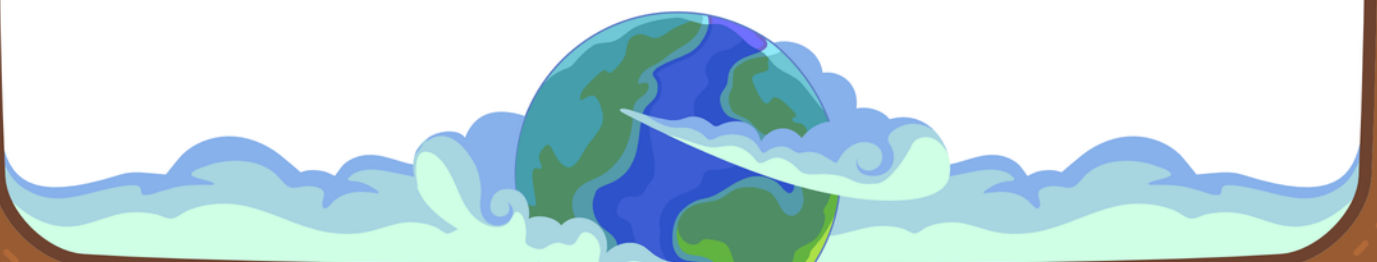
Create Portraits

Use the trading card image and description as a stimulus for students to create a portrait of a chosen character. Attach adjective word cards around the image.



Create Displays

Create a description of the character and attach the description to the bottom of the artwork. Display in the classroom.



TRADING CARDS

Cut out the cards to add to your collection.



TRADING CARDS

Cut out the cards to add to your collection.



TRADING CARDS

Cut out the cards to add to your collection.

STEPS



STORYVERSE
Trading Cards

Copyright © Intrepica Pty Ltd.

CHARACTER

NAME | Stepps

**PET
PHRASE**

**"YOU HAVE MY
APOLOGIES..."**

PROFILE

Stepps has a habit of keeping to herself. She can be blunt, unimpressible and mildly jaded. Nevertheless, she is not outspoken like Stag or Stonn. When she is bitten by the Day Howler, rather than be healed, she refuses. She is left with a scar and the effects of the Day Howler curse which she must learn to control.



TRADING CARDS

Colour in Stag and then cut out the cards to add to your collection.

STAG



STORYVERSE
Trading Cards

Copyright © Intrepica Pty Ltd.

CHARACTER

NAME | Stag

**PET
PHRASE**

**"YOU GUYS ARE
ALRIGHT!"**

PROFILE

As the oldest of the group, Stag feels responsible for Stonn and Steps. His age, strength, and personality make him the undisputed leader of the group. Although he tries to avoid danger, if danger is unavoidable, he will take action. Stag is cautious, stoic and doesn't care much for small talk.



TRADING CARDS

Colour in Stonn and then cut out the cards to add to your collection.



TRADING CARDS

Colour in Stepps and then cut out the cards to add to your collection.

STEPS



STORYVERSE
Trading Cards

Copyright © Intrepica Pty Ltd.

CHARACTER

NAME | Stepps

**PET
PHRASE**

"OH GOB!"

PROFILE

Stepps has a habit of keeping to herself. She can be blunt, unimpressible and mildly jaded. Nevertheless, she is not outspoken like Stag or Stonn. When she is bitten by the Day Howler, rather than be healed, she refuses. She is left with a scar and the effects of the Day Howler curse which she must learn to control.



TRADING CARDS

Draw and colour in Stag, fill in his profile, and then cut out the cards to add to your collection.

STAG

STORYVERSE
Trading Cards

Copyright © Intrepica Pty Ltd.

CHARACTER

NAME | Stag

PET
PHRASE

PROFILE



TRADING CARDS

Draw and colour in Stonn, fill in his profile, and then cut out the cards to add to your collection.

STONN

STORYVERSE
Trading Cards

Copyright © Intrepica Pty Ltd.

CHARACTER

NAME | Stonn

PET
PHRASE

PROFILE



TRADING CARDS

Draw and colour in Stonn, fill in his profile, and then cut out the cards to add to your collection.

STEPS

STORYVERSE
Trading Cards

Copyright © Intrepica Pty Ltd.

CHARACTER

NAME | Steps

PET
PHRASE

PROFILE



TRADING CARDS

Draw and colour in a character, fill in the character's profile, and then cut out the cards to add to your collection.

STORYVERSE
Trading Cards

Copyright © Intrepica Pty Ltd.

CHARACTER

NAME | _____

PET
PHRASE

PROFILE





WELCOME TO YOUR

STORYVERSE

ACTIVITY PACK

Series II

Please get in touch if you need further details about our Storyverse Activity Packs.

Customer Care Team

For all the help you need:



[LiteracyPlanet Hub](#)



www.literacyplanet.com



hello@literacyplanet.com

